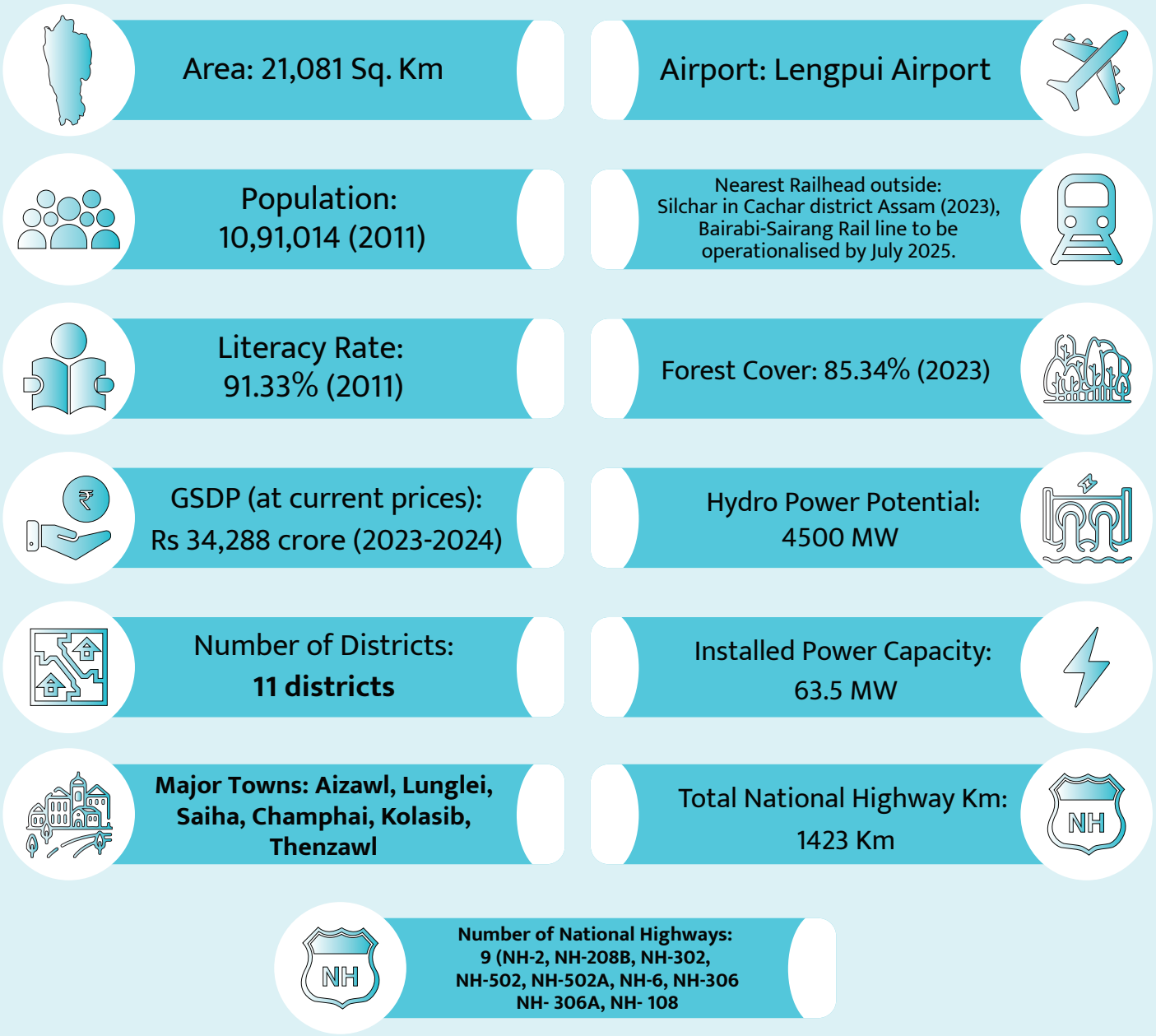


MIZORAM



The name Mizoram implies "Land of the Mizos" or "Land of the hill people". About 95% of the current Mizoram population is of diverse tribal origins having settled in the state. Mizoram was made a full-fledged State of the Indian Union on the 20th of February 1987. It is the southernmost land-locked state in Northeast India sharing its border with the states of Manipur, Assam and Tripura in the North. Mizoram also shares 722 kilometres long international borders with Myanmar and Bangladesh and has the potential to become a transit point for international trade.

STATE SNAPSHOT



CONNECTIVITY

- 6 National Highways: NH-306 connects Silchar (Assam) to Aizawl (Mizoram) and NH-6 connects Dhaleswar (Assam) to Bairabi (Mizoram).
- A road is proposed to connect Champhai in south Mizoram to Tiddim in Myanmar, potentially forming a loop to the India-Myanmar-Thailand Trilateral Highway.
- Lengpui Airport is the only airport in India constructed, owned and operated (with technical assistance from AAI) by the State Government.
- Broad- gauge Bairabi-Sairang rail line under construction.
- The Kaladan Multi Modal Transit Transport Project will connect Sittwe Port in Myanmar to the India-Myanmar border through a multi-modal mode of transport for shipment of cargo from the eastern ports of India to Myanmar as well as to the North-Eastern part of India through Myanmar.



A. THE MIZORAM SUSTAINABLE INVESTMENT POLICY, 2024

- **Customized Incentives** – Large projects (₹100 crore+) can apply for tailored incentives, assessed on a case-by-case basis.
- **Single Window Clearance** – State-level approvals will be streamlined under the Mizoram Ease of Doing Business Act, 2022.
- **Solar Power** – Investor units are encouraged to install rooftop solar photovoltaic units which can be used to sell units to the P&E Department as per Solar Power Policy of Mizoram, 2017.
- **Manpower Incentive** – Financial support for skilling and training indigenous workers, provided as a reimbursement.
- **SGST Reimbursement** – Manufacturing MSMEs can claim net SGST reimbursement (excluding input tax credit) for five years, with claims to be filed within six months of SGST returns.

The policy emphasises on institutional frameworks for Investment Promotion including the State IPA as well as Empowered Committee and Working Committee for Investments.

UTTAR POORVA TRANSFORMATIVE INDUSTRIALISATION SCHEME (UNNATI SCHEME, 2024) BY DPIIT

- Capital Subsidy: 30% of the investment in P&M or construction of building & durable physical assets up to Rs 5 Cr in Zone A and 50% upto Rs 7.50 Cr for Zone B.
- Interest Subsidy: Interest subvention of 3% for Zone A and 5% for Zone B on loan up to the principal amt of Rs. 250 crore on eligible P&M for 7 years.
- Manufacturing & Services Linked Incentive: 100% of the Net payment of GST for 10 years up to 75% of eligible value of investment in P&M for Zone A and 100% of eligible value of investment in P&M for Zone B.

All 11 districts in Mizoram are listed as Zone B (Industrially Backward Districts); subsidies ply accordingly

WHY MIZORAM?

- 2nd most literate state in India (literacy rate of 91.33%).
- Among the fastest growing states in India with the Gross State Domestic Product (GSDP) increasing by 14.96 percent from the FY 2021-22 to FY 2022-2023.
- Highest forest cover in India - 85.34% of its geographic area covered by forest (ISFR 2023)
- Best Green State in 2020 (by Travel & Leisure Magazine in 2020).
- Happiest State in India (by Management Development Institute, Gurugram in 2023).
- Estimated Hydro-electric power potential of the state at 4500 MW. Investments open to hydel power projects for Tuirini HEP (26MW), Tuivawl HEP (24MW) and Mat Sekawi HEP (70MW).
- Mizoram recognized as India's 'Emerging Startup Ecosystem', in States' Startup Ranking 2024, for aspects such as capacity building of enablers, mentorship and institutional support.
- Bordering Myanmar and Bangladesh, Mizoram offers a gateway for engaging in international trade with South Asian and Southeast Asian countries.
- Kaladan Multi Modal Transport Project (under construction) linking Mizoram with Myanmar port of Sittwe to accelerate trade between India and ASEAN nations.



FOCUS SECTORS:

SPORTS:

- Dedicated Sports Policy providing 'Industry Status' to the sector to professionalise sports in the state.
- Major hub for sports, especially football, which is played competitively through the Mizoram Premier League.
- 192 Indian Super League players since 2014; 50-60 I-League players each season.
- SYS Academy at Lena Stadium at Lunglei and Regional Sports Training Centre in Kolasib to nurture young talent.
- The Paragliding Accuracy World Cup 2020 held at Serchhip in Mizoram. Asia's first-ever Red Bull Urban Downhill Race was in Aizawl, Mizoram
- Opportunities: Development of new & Upgradation, operations and management of existing sports- training infrastructure; development, operation and maintenance of infrastructure for adventure sports.



HANDLOOM & HANDICRAFT:

- Huge potential for textile and handloom sector for exports to Southeast Asian countries.
- Mizoram ranked third position among Northeast states in mulberry silk production.
- Raw silk production in Mizoram stood at 59 metric tonnes in FY 2021-22.
- Thenzawl ('Handloom city' of Mizoram)- total of 2003 looms & production value of Rs 10.8 crores.
- 5 Puans (traditional attires)- Pawndum, Ngotekherh, Hmaram, Tawlhlohpuan and Mizo Puanchei are GI tagged Handloom products.
- Flatted Factories available on rental/Lease at IGC Luangmual and Mizoram Handloom Export Facilitation Hub located in Thenzawl.
- Opportunities: Design interventions and export of handlooms.



AGRI-HORTI FOOD PROCESSING:

- Wide variety of vegetables, spices, oilseeds, and pulses, plantation crops, medicinal and aromatic plants due to good agro-climatic conditions, topographical variations, and altitudinal advantages.
- A Handholding Scheme (Bana Kaih) was launched in 2024 providing financial assistance and support to entrepreneurs and farmers for Mizo Chilli, Ginger, Turmeric and Broom crop.
- Ample production of commercial fruits such as Strawberry, Dragon fruit, Passion fruit, Mandarin Orange, Banana, Mango, Strawberry, Grape and Pineapple.
- Mizo Chilli & Mizo Ginger are GI tagged for their unique physical and chemical characteristics.
- Opportunities: Post Harvest Management/ Processing /Marketing of Pineapple, Dragon Fruit, Passion Fruit & others, Fruit Wine Production, Post Harvest Management/ Processing/Marketing of Ginger, Turmeric, Zo Chilli & Cold Chain Management.



TOURISM

- Mizoram tagged as 'MYSTICAL MIZORAM'
- Tourism accorded "Industry status".
- Boasts of Scenic landscapes bluish hills and mountains, steep rocky cliffs, serene lakes and deep valleys, gurgling streams and spectacular waterfalls.
- Lyuva Khutla, Chapchar Kut, Anthurium Festival, and the Winter Festival attract tourists from across the world.
- Popular destinations: Vantawng Falls, Phawngpui National Park, Khamrang EcoTourism Village, Palak Lake, Ailawng Caves, Reiek Hills, Tawi Cave, Mawmrang Tlang, Khawhpawp, Hmuifang, Tuirihiau, Tuirum, Murlen National Park, and Tam Dil.
- 'Responsible Tourism Policy (2020) introduced for sustainable approach towards tourism development
- Sialsuk and Reiek village won the Best Tourism Village award in 2024 and 2023 respectively.
- One of the best states for paragliding- most prominently in Serchhip, Khawzawl and Champhai.
- Investment opportunities: development of hotels and accommodation units (PPP), adventure tourism, operations and running of courses in State Institute of Hotel Management.



BAMBOO & FORESTRY

- Highest forest cover in the country (84.34%) in terms of percentage of total geographical area.
- Mizoram, known as the "Bamboo Queen" of India, has abundant bamboo resources, with around 57% of its geographical area covered by bamboo forests.
- 18,186 sq. km of forest coverage area rich in valuable timber yielding trees and non-timber forest products.
- Bamboo Development Agency constituted to promote utilization of Bamboo resources in the state.
- Opportunities: Production of Bamboo charcoal, paper pulp, high-end furniture using bamboo.





RISING NORTHEAST

INVESTORS SUMMIT 2025



For more information contact:

Dr. Lalrinchhana	Mr. Nasim Javed	Ms. Annu Johny
Principal Adviser-cum-Additional Secretary, Planning & Programme Implementation Department	FICCI	Invest India
+91 9436140323	+91 7002107375	+91 9205169444
investmizoram@gmail.com	nasim.javed@ficci.com	annu.johny@investindia.org.in



www.northeastgis.in